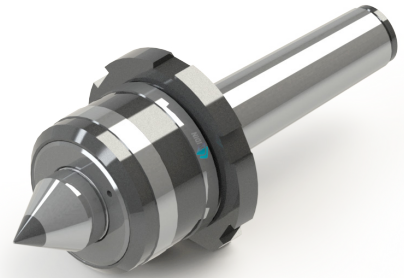
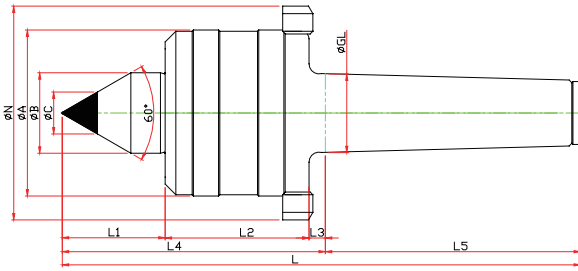


NKCN-TYPE

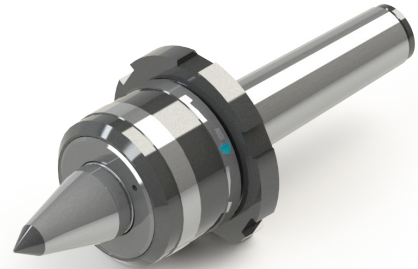
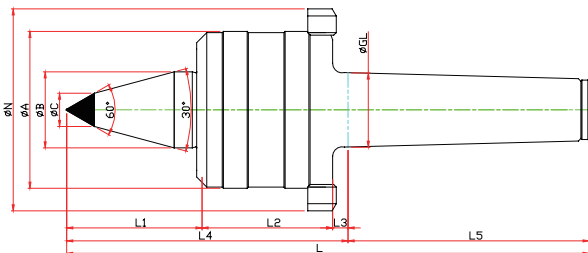
※ 너트, 초경타입 Carbide, Nut Type



| Model | Order Number | Morse Taper | Dimension | | | | | | | | | | | Weight MAX. | R.P.M MAX. | Run Out |
|---------|--------------|-------------|-----------|-----|----|------|-----|-----|-------|-------|----|-----|-------|-------------|------------|---------|
| | | | GL | A | B | L1 | L2 | L3 | L4 | L5 | C | N | L | | | |
| LC-3NKC | 020113 | NO.3 | 23,825 | 52 | 22 | 29 | 42 | 5 | 76 | 80 | 10 | 70 | 156 | 1900 | 5000 | 0,003 |
| LC-4NKC | 020114 | NO.4 | 31,267 | 66 | 32 | 37 | 57 | 6.5 | 100.5 | 101.5 | 14 | 85 | 202 | 2700 | 3800 | 0,003 |
| LC-5NKC | 020115 | NO.5 | 44,399 | 80 | 40 | 45.5 | 57 | 6.5 | 109 | 129.5 | 18 | 98 | 238.5 | 3200 | 3400 | 0,005 |
| LC-6NKC | 020116 | NO.6 | 63,348 | 132 | 65 | 65 | 100 | 8 | 173 | 182 | 25 | 165 | 355 | 10000 | 1800 | 0,005 |

NKBCN-TYPE

※ SHAFT 확장(바이트 간섭 최소화) SHAFT EXTENSION(Minimize the bite-interference)
 ※ 너트, 초경타입 Carbide, Nut Type



| Model | Order Number | Morse Taper | Dimension | | | | | | | | | | | Weight MAX. | R.P.M MAX. | Run Out |
|----------|--------------|-------------|-----------|-----|----|------|-----|-----|-------|-------|----|-----|-------|-------------|------------|---------|
| | | | GL | A | B | L1 | L2 | L3 | L4 | L5 | C | N | L | | | |
| LC-3NKBC | 021113 | NO.3 | 23,825 | 52 | 22 | 48 | 42 | 5 | 95 | 80 | 10 | 70 | 175 | 980 | 5000 | 0,003 |
| LC-4NKBC | 021114 | NO.4 | 31,267 | 66 | 32 | 53 | 57 | 6.5 | 116.5 | 101.5 | 14 | 85 | 218 | 1400 | 3800 | 0,003 |
| LC-5NKBC | 021115 | NO.5 | 44,399 | 80 | 40 | 65.5 | 57 | 6.5 | 129 | 129.5 | 18 | 98 | 258.5 | 1900 | 3400 | 0,005 |
| LC-6NKBC | 021116 | NO.6 | 63,348 | 132 | 65 | 78 | 100 | 8 | 186 | 182 | 25 | 165 | 368 | 5100 | 1800 | 0,005 |

NC-TYPE

NCP-TYPE

NK · NKD TYPE

GR · SM TYPE

SMP-TYPE

D50 TYPE

HD-TYPE

PT-TYPE

LM CENTER

LM-H CENTER